

# MT625

## CONTACTLESS IC CARD READER

### 非接触式读卡器



## Overview

### 产品概述

铭特MT625系列非接触式读卡器是基于操作ISO14443与ISO7816标准卡片的读卡模块，配有两个SIM卡座，可灵活配置PSAM卡和ESAM卡。该产品在多种领域中得到广泛的应用，包括电动汽车充电桩、自助终端机、加油机、加气机、停车场系统、自助售票机、自动售货机及身份认证终端等。

MINGTE' s MT625 series contactless IC card reader is a card reading module, which supports ISO14443 Type A & B contactless IC card and ISO7816 smart cards. It has 2 SIM card slots for flexible PSAM & ESAM configuration. It excels in various fields, including Vehicle Charging Points, Kiosk Terminals, Fuel Dispensers, CNG Dispensers, Parking Systems, Ticketing Machines, Vending Machines and ID Terminals etc.

## Features

### 产品特点

- 支持符合ISO14443 Type A和Type B标准的非接触式IC卡的操作
- 支持符合ISO14443标准的S50和S70(Mifare)卡的操作
- 支持符合ISO7816标准的PSAM和ESAM卡的操作(PSAM和ESAM接口用户可选)
- 可根据用户需求兼容南方电网充电桩或国家电网充电桩应用流程
- 根据充电行业应用或金融应用，支持内部封装，降低二次开发难度
- 多种通信方式，可根据客户需求定制
- 可支持各地区城市一卡通，支持通过RS232串口在线升级
- 天线尺寸精心设计，符合大多数面板开孔设计
- 多种安装尺寸设计，温度适应性强
- Support contactless IC card (ISO14443 TYPE A & B)
- Support S50 & S70 (Mifare) card (ISO14443)
- Support PSAM & ESAM card (ISO7816), optional PSAM and ESAM
- Customized for compatibility with application flow of charging points from China Southern Power Grid or State Grid
- Customized for charging or financial applications, easy and cost-effective for secondary development
- Various corresponding and custom design
- Support city card of different areas, software updated via RS232 supported
- Carefully-designed antenna size for most installation design
- Various installation dimensions design, temperature-proof



# MT625

## Applications

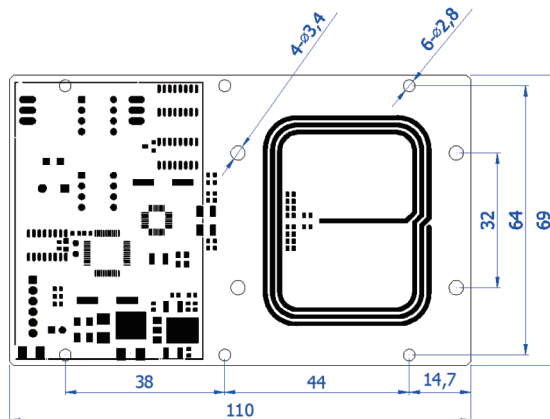
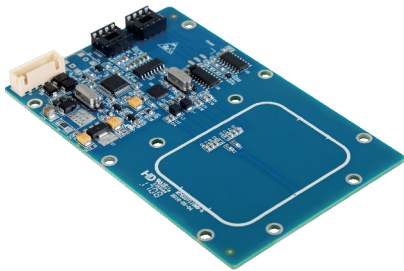
### 应用

电动汽车充电桩 / 自助终端机 / 加油机 / 加气机 / 停车场系统 / 自助售票机 / 自动售货机 / 身份认证终端  
 Electric Vehicle Charging Points / Kiosk Terminals / Fuel Dispensers / CNG Dispensers / Parking Systems / Ticketing Machines / Vending Machines / ID Terminals,

## Specifications

### 性能指标

支持卡类型 / Card Type		接触式IC卡 / Contact IC Cards	非接触式IC卡 / Contactless IC Cards
非接触式卡(可选) Contactless IC Card (Optional)	ISO14443 Type A & B & MIFARE	读、写 / R, W	
IC卡 IC Card	SIM/PSAM/ESAM	读、写 / R, W	
	EMV	Level 1认证 / Level 1 Approved	
读卡距离 / Card Reading Distance		4-8厘米、106Kbit(与卡和安装环境有关) / 4-8cm and 106Kbit (Related to Cards and Installation Environment)	
接口 / Interface		RS-232/TTL(uart)	
波特率 / Baud Rate		9600/38400/57600/115200bps	
天线 / Antenna		PCB天线 / PCB Antenna	
工作频率 / Frequency		13.56MHz	
卡与机具通讯速度 Communication Speed		106Kbit(212Kbit, 424Kbit pps命令可选) 106Kbit(212Kbit & 424Kbit pps Commands Optional)	
二次开发 Secondary Development		VC, Linux	
操作系统 / Operating System		Windows 98, Me, 2K, XP, 2003, Vista and Linux	
存储数据容量 / storage Data Capacity		读写器内存储器标准配置 / Standard Capacity inside Reader: 4K 字节 / Bytes	
状态显示 / Status Display		LED 指示灯指示电源或通讯状态, 用户可控蜂鸣器 LED indication light for power & communication status, user controlled buzzer	
工作电压 / Power Supply		DC5V 或 / or +9-12V $\pm$ 5%	
工作电流 / Current		静态电流 / Static Current: $\leq$ 25mA(5V)	最大电流 / Max Current: $\leq$ 130mA(5V)
工作温度 / Working Temperature		-40~+65°C	
重量 / Weight		约32g / Approx 32g	



深圳市铭特科技有限公司  
SHENZHEN MINGTE TECH CO., LTD.

地址: 深圳市南山区高新园北区航天微电机大厦科研楼四楼南侧  
 邮编: 518057  
 电话: +86-755-86030926(国内销售部)  
 传真: +86-755-86030955  
 邮箱: sales@mingte.cn  
 网址: www.mingtetech.com

Add: 4/F, Aerospace Micromotor Building, High-tech Industrial Park  
 North, Nanshan District, Shenzhen, China  
 Postcode: 518057  
 Tel: +86-755-86232730(Sales Dept.)  
 Fax: +86-755-86030955  
 E-mail: sales@mingte.cn  
 Website: www.mingtetech.com

